



YOU + NISSAN

HOW TO PURCHASE AND DOWNLOAD MY NISSAN CAMERA ALERT PRODUCT

SAFETY PRECAUTIONS

WARNING!

- This navigation system should not be used as a substitute for your own judgment. Any route suggestions made by this navigation system may never override any local traffic regulations, your own judgment, and/or knowledge of safe driving practices. Disregard route suggestions by the navigation system if such suggestions would: cause you to perform a hazardous or illegal maneuver, place you in a hazardous situation, or route you into an area you consider unsafe.
- The advice provided by the navigation system is to be regarded only as a suggestion(s). There may be situations where the navigation system displays the vehicle's location incorrectly, fails to suggest the shortest course, and/or fails to direct you to your desired destination. In such situations, rely on your own driving judgment, taking into account current driving conditions.
- Do not use the navigation system to route you to emergency services. The database does not contain a complete listing of locations of emergency service providers such as police, fire stations, hospitals and clinics. Please use your judgment and your ability to ask for directions in these situations.
- As a driver you are solely responsible for your road safety. In order to avoid a traffic accident or traffic offence, remember that actual road conditions and traffic regulations take precedence over the information contained in the navigation system.
- Accordingly, the software may contain inaccurate or incomplete information due to the passage of time, changing circumstances, and due to the nature of the sources used. Please observe the actual traffic circumstances and regulations at all times while driving.
- The navigation system does not provide, or account for in any way; information regarding traffic and road laws; vehicle specifications including weight, height, width, load, and/or speed restrictions; road conditions including road slope, grade, and/or surface conditions; obstruction information including bridge and tunnel height and width, and/or other prevailing driving and/or road conditions. Always rely on your own driving judgment, taking into account current driving conditions.
- Minimize the amount of time spent viewing the screen while driving.
- The driver should not operate this unit while driving. Be sure to stop the vehicle in a safe place when the driver is operating this unit. For safety, some of the navigation functions are prohibited unless the vehicle is stopped with the parking brake engaged.

CAUTION!

- While driving, set the volume so that sound from outside the vehicle can be heard. Driving without hearing sound from the outside of the vehicle may cause a traffic incident.



Compatibility:

Currently only the NISSAN Connect 1.5 Navigation systems are compatible for the Speed Camera Alert product. This navigation system is an optional extra depending of the build year for NISSAN Qashqai, Qashqai+2, Micra, Note, Cube and Juke.

- Step 1** Establish which navigation system you have
- Step 2** Purchase the Speed Camera Alert Product
- Step 3** Transfer data from PC to your navigation device

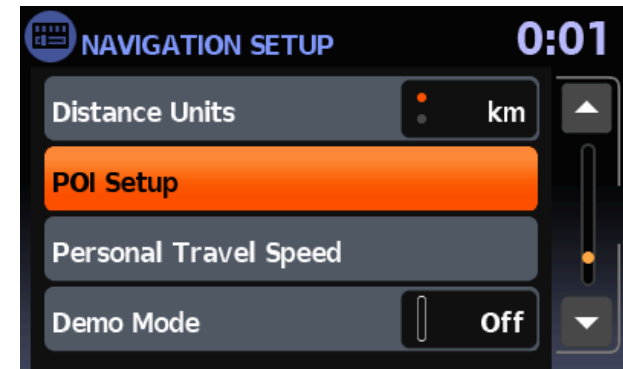
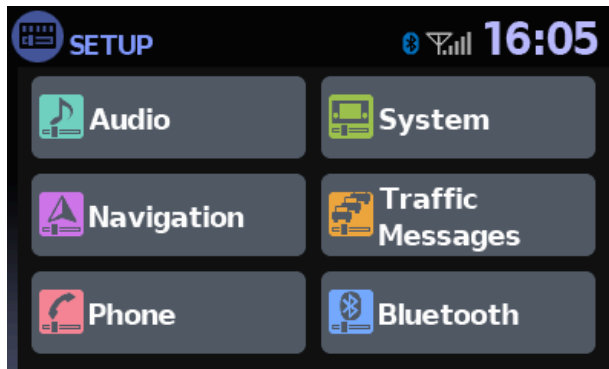


STEP 1

Establish which navigation system you have

DEVICE ID

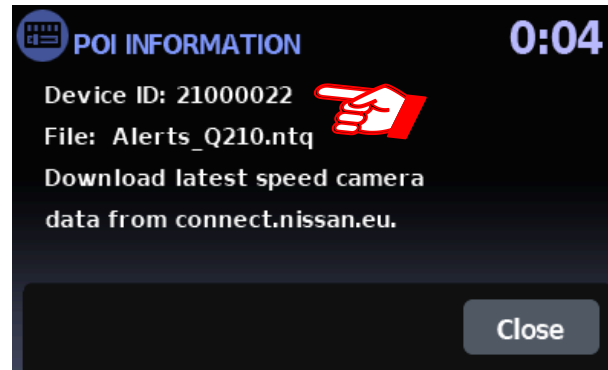
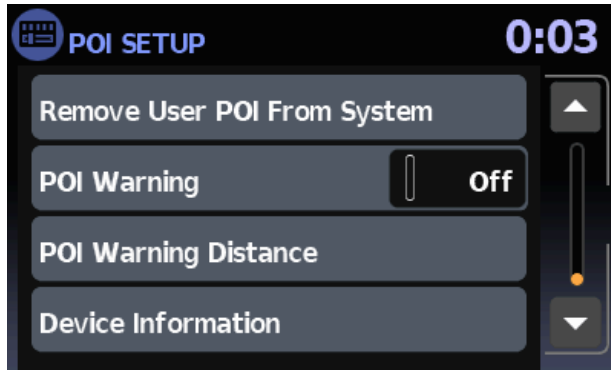
During the download process of camera alert POIs (Points of Interest) you will be asked to enter the device ID. The 8-digit device identification number (called device ID) is used to assign the POI file to a specific NISSAN Connect unit.



1. Turn your NISSAN Connect unit on, press the SETUP key and the settings menu screen will appear.
2. Touch the [Navigation] button or turn the scrolling dial to highlight [Navigation]. Then press the dial.
3. Scroll through the list and touch the button [POI Setup].



STEP 1 (CONT.)



4. Scroll down to the end of the list and touch the button [Device Information].

5. A detailed description of the active POI file and the device ID are provided.

If a device ID appears on your screen, you are owner of a NISSAN Connect 1.5 system and your system is ready for the Camera Alert Product. In case there is no device ID as shown in the instructions you have a NISSAN Connect 1.0.



STEP 2

Purchase the NISSAN Camera Alert Product

Select your vehicle model, year and from the list of products displayed, put the Europe NISSAN Camera Alert product into the cart and proceed to checkout.

As part of the purchase process, you will be required to type in the device ID of your NISSAN Connect navigation system.

Download the data file to your PC and store it.



STEP 3

To transfer the data from the PC to your navigation device

You require a USB stick of with a minimum capacity of 50MB.

Either download the [NISSAN Connect PC Tool](#) and follow the instructions to install it to your PC and transfer the data onto the USB stick.

Instructions to do this can be found within the appendix on page 11.

Alternatively, create a route folder on the USB stick called **myPOIs** and in this folder a subfolder called **myPOIWarnings** (x:\myPOIs\myPOIWarnings). The downloaded file must go into this subfolder.

Connect the USB to the navigation device. The device will automatically recognize the data on the USB and show you a popup screen to download the file to the device (download/cancel) .

Press download and see a “progress bar” running. After the files have transferred to the device you can unplug the USB.



STEP 4

Speed camera alert product updates

With every new available camera alert file the process has to be repeated. Uploading a new file will overwrite the old existing one on the device.





APPENDIX

Index

- System requirements
- Introduction
- Installation
- Uninstall the application
- Run the application
- How to copy warning POI
- How to copy my POI
- Other menu items

System requirements

Operating System

Windows XP SP3
Windows Vista
Windows 7

Microsoft .NET Framework

2.0 or higher

Space available on Hard Disk

20 mb

USB Pendrive



NISSAN CONNECT PC TOOL

Introduction

NISSAN Connect PC Tool application allows you to copy Nissan Points Of Interest (POI) to an USB pendrive in order to move them to your NISSAN Navigation System. Files containing Points Of Interest are divided into:

- **Warning POI:** Points Of Interest containing Radar Alert points delivered from NISSAN (files are in **ntq** format).
- **My POI:** Custom Points Of Interest (files must be in csv format)

Installation

Run **Setup_NISSAN_Connect_PC_tool.exe** and follow the on-screen instructions.

Uninstall the application

Select:

Start → Programs → NISSAN Connect PC Tool → NISSAN Connect PC Tool Uninstaller



How to copy "Warning POI" to USB pendrive

- A. Insert an USB pendrive in a free USB port of your PC.
- B. Click on red highlighted button.



- C. Open File Browser to select **ntq** file to import.



NISSAN CONNECT PC TOOL

D. Select your USB device



E. Click on button IMPORT , Warning POI will be copied to the USB pendrive.



How to copy "My POI" on the USB pendrive

- A. Insert an USB pendrive in a free USB port.
- B. Click on red highlighted button



- C. Open File Browser to select **csv** file to import.

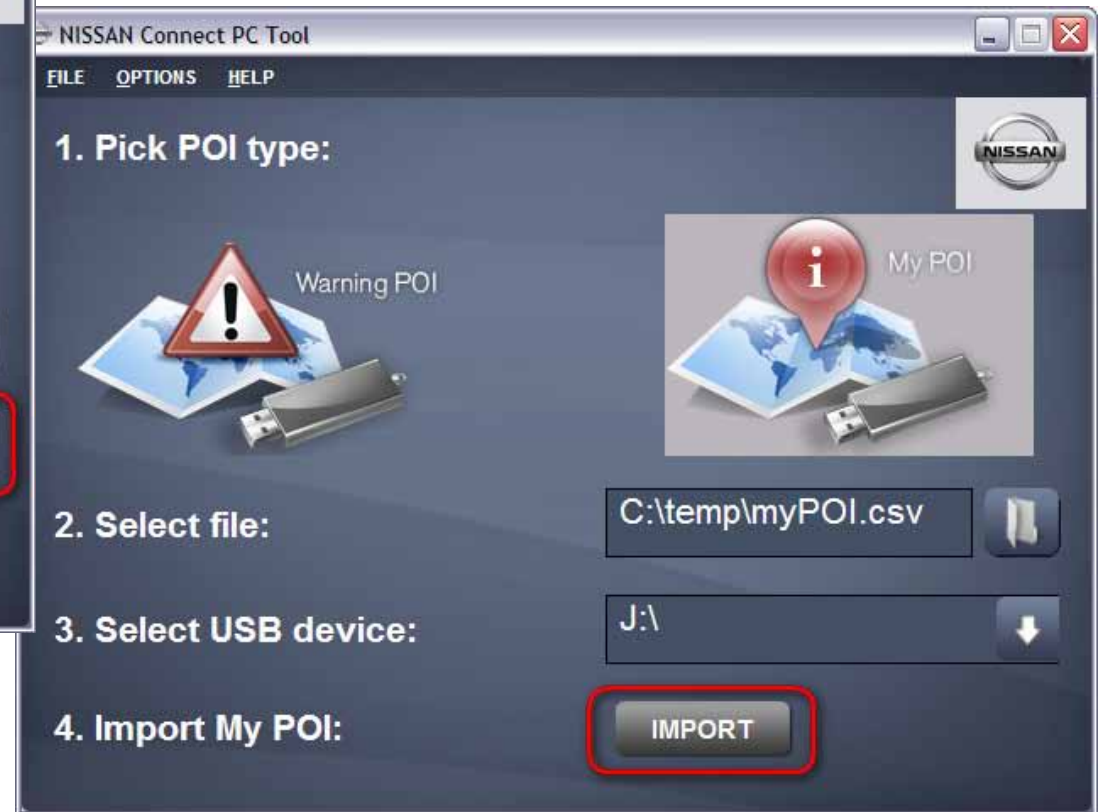


NISSAN CONNECT PC TOOL

D. Select your USB device



E. Click on button IMPORT , Points Of Interest will be copied to the USB pendrive.



NISSAN CONNECT PC TOOL

Menu items

How to change a language.



Help Menu

- 1 Show User Manual on Internet Browser
- 2 Show application informations.



